



Work Party Highlights

The Work Parties have been as busy as ever over the last six months. It looks as though we are again on target for 3,000 volunteer hours during the year.

EASTENDERS

The Eastenders have been involved in their usual mix of activities on the eastern section of the Port Hills. This has included track maintenance on the Chalmers and Whakaraupo Tracks and in Cavendish Reserve, and planting at Rapanui Bush and Sumnervale Reserve. Only small remnants of native bush characterise the hills around Sumner, and the 500 trees and shrubs planted by the group in Sumnervale Reserve will help in restoring this popular walking area. Still in Sumner, mention should be made of Bill LeGros and Terry Evrard, who not

OHINETAHI

Mike White reports:

A walk through the Ohinetahi Bush Reserve is strongly recommended this summer. Regular rainfall through the winter and spring has been nurturing the bush and the pristine forest canopy glistens with healthy leafy growth.

The Reserve's work team has been turning out regularly each Tuesday during the winter and spring to continue with the required maintenance and management.

Further plantings along the boundary above Governors Bay were carried out with seedlings purchased from funds obtained from the Lion Foundation. We have been encouraged to continue with this programme by the strong growth

discovered that possums love peanut butter which lure them to the stations! Target's tally this year was 262 kills following 300 last year but who knows how many are still romping around. Our team maintain their enthusiasm for the Reserve, being inspired by the spectacular and dramatic environment, the encouraging signs of forest health and regeneration, and of course the comradeship of the weekly outings.

In addition to the regular work on our own reserve, the team has been 'spreading its wings'. Two members helped at a recent planting day at Rapaki, and members have also helped the Governors Bay Landcare Group, who are good friends and supporters of the Society, with weed control on covenanted land in the Zephyr Terrace area.

WEEKENDERS

The Weekenders is still struggling to increase its membership, but nonetheless manages to contribute to the Society's voluntary efforts. Mid-year saw the group start work on the re-alignment of the Wai-iti Track at Ohinetahi Reserve. This has been enthusiastically taken on board by the Ohinetahi group since. The latter part of the year has seen the Weekenders return to Scott Reserve, releasing native plantings and clearing broom. Special thanks go to John Watson, who not content with his Tuesdays at Ohinetahi Reserve, happily lends his presence and skills on a Saturday afternoon.

Colin & Ben Faulkner:

When we talk about the Society work parties, one normally thinks of the Eastenders and the Ohinetahi group. However, we should not forget the Faulkner brothers, Colin and Ben, who have been keen supporters of the Society for many years. They are still active in maintaining tracks in the Gebbies Pass area.

All the work parties would welcome new members. The contacts are:

Eastenders (fortnightly on a Monday morning) **Geoff Bendall 384 9254**

Ohinetahi (weekly on a Tuesday) **Gordon Kirk 960 7134**

Weekenders (monthly on a Saturday afternoon) **John Goodrich 326 7330**



left to right; John Willocks, Ian Wood, Bruce Bunny, Ken Rossiter and Bob Cawley taking a well earned break whilst working on the Whakaraupo track

content with their two-man mission to keep the Captain Thomas Track in shape, with the help of Ted Matthews, have created what will become a very popular loop track linking Rapanui Bush and Sumnervale Reserve/Captain Thomas Track, via the south side of Evans Pass. Their efforts earned them a piece in the November 24th issue of Bay Harbour News.

Often not considered as part of the network of tracks on the Port Hills, the circuit of Barnett Park is nonetheless a great walk. In recent years this has become neglected, and the Eastenders have now started maintenance work here, with their usual enthusiasm and commitment.

of the well established seedlings planted 3 winters ago. Releasing of these seedlings is a regular activity as grass growth threatens to overwhelm them. Despite all the weeding carried out in the past more weeds continue to be discovered. The team return home battered and scratched after a day clearing banana passionfruit, battling through blackberry bracken and gorse on steep terrain to get to the roots of this invasive weed where one plant can smother huge areas of regenerating bush. There is always plenty of old-mans-beard, cherry, barberry, to be dealt with as well.

The team is following up Target Pest Management's possum hunt in the Reserve financed by Ecan) with our own bait stations using Talon bait. We have

New Members Welcome

Mr & Mrs Bradley

Robin Collie

Tui Elliott

Jackie Griffith

Ron & Sue Ricketts

Total membership stands at 235. When compared to environmental groups, many of which have a declining membership, we should be pleased that we are managing to maintain our numbers. New members are always welcome of course, and you can do your bit by telling your family, whanau and friends about us.



We would also like to welcome to the Society's Board Councillor Annette Foster, representing Selwyn District Council, and Councillor Jeremy Agar, representing Banks Peninsula District Council. We are also pleased that Paul de Spa and John Freeman were re-elected to the Spreydon/Heathcote and Hagley/Ferrymead Community Boards, and that both will be maintaining their close links with the Society.



Summit Road Society (Inc)
PO Box 17-719, Christchurch
Website: www.summitroadsociety.org.nz
Email: secretary@summitroadsociety.org.nz

President	Maurice McGregor	332 0597
Vice-President	Mike White	03 312 1551
Secretary	John Goodrich	326 7330
Treasurer	Paul Loughton	322 7082
Board Members	Geoff Bendall	384 9254
	Barry Gerard	326 5105
	Anne Kennedy	377 0364
	Janey Thomas	03 314 9514
	John Watson	332 5169
<i>Honorary Life Members</i>	John Jameson	354 5925
	Gordon Kirk	960 7134
<i>Representatives</i>		
Selwyn District Council	Annette Foster	347 8651
Banks Peninsula	Jeremy Agar	328 9956
Hagley/Ferrymead	John Freeman	326 6406
Spreydon/Heathcote	Paul de Spa	041 8999
Port Hills Rangers		332 5627
Dept of Conservation	Tony Woods	388 1678
<i>Work Parties</i>		
Eastenders	Geoff Bendall	384 9254
Kiwigang	Anne Henderson	352 8058
Ohinetahi	Gordon Kirk	332 7134
Weekenders	John Goodrich	326 7330

We are a voluntary society working to enhance, preserve and protect the natural environment, beauty and open character of the Port Hills of Banks Peninsula for people to enjoy. We need and welcome contributions to our work through memberships, donations and corporate sponsorships, participation in work parties (non-members welcome - but why not join us as well!), and bequests.

Cliff Holdsworth

In September, with the passing of Cliff Holdsworth, the Society lost one of its great characters, and someone who had a pivotal role in the formation of the Hill Work Parties, which remain such a fundamental aspect of the Society's activities. The Work Parties had humble beginnings in 1968, when Cedric Turner and Cliff decided to set aside each Tuesday for practical work for the Society. From its foundation, the Society had been involved in fencing, planting, weed control etc, but this had been rather sporadic. Cliff transformed this into a regular and organised activity, and his legacy is that the work parties today represent the Society's most effective and visible activity, involving around 70 volunteers.

Cliff's professional background as Chief Draughtsman in the Department of Lands and Survey gave him "...an eye for detail and an extraordinary meticulousness in his organisation". This enabled him to carry out some of the earliest detailed mapping of walking tracks. He was also a good ambassador for the Society, and played an important role in the development of the working relationship that exists between the Society and the City Council. In the early years, the record of achievements is impressive, with work, for example, at Kennedy's Bush, Dry Bush, Ahuriri Reserve, Sugar Loaf and Cass Peak. Cliff was largely responsible for saving Dry Bush.

Shortly before his death in 1983, Cedric Turner published thumbnail sketches of what he termed the 'Merry Geriatrics':

"Cliff Holdsworth: *Dedicated, desiccated, so sparsely built people wonder what is holding up the hat. Carries his own fumigating plant. Apt to break into long discourses about nothing in particular. Expert in calligraphy. Has made a close study of various methods of writing and has developed own style which nobody can read"*

(Acknowledgements: John Jameson for background information, and Jennifer Loughton for information taken from "50 Years Along the Road".)



Upholding the tradition; the Eastenders hill work party contribute to the upkeep our Port Hills walking tracks - in this instance the Whakaraupe track overlooking Lyttelton.

Request for Historical Information

The collection and cataloguing of historical information about the Society is an ongoing task. If you have any articles, photographs, or any other information which may add to our historical record, please contact the Secretary on 326 7330.

Recent Outings



Mike White formally thanking Ian Hurst for his contribution to the Ohinetahi Work Party

MID-WINTER DINNER – Saturday 21 August ▲

In a break from tradition for the Society, on Saturday 21st August, 24 members had a relaxing and entertaining evening courtesy of Lindsey and Siggy Sigglecrow, at the Sign of the Kiwi. The food was excellent, with everyone encouraged to create a party atmosphere with Christmas decorations, party poppers and a competition to 'create a reindeer' with balloons. The Society would like to thank Lindsey and Siggy for their warm hospitality.

RAPAKI – Sunday 19 August ►

On Sunday 19th August, we were guests of Te Hapū o Ngāti Wheke (Rapaki) Rūnanga at Rapaki. The visit started with a formal welcome onto the marae, followed by a powhiri. This was led by Ray Kamo on behalf of the tangata whenua. Maurice McGregor represented the manuhiri (visitors) and spoke briefly about the Society and its work.

After morning tea, Yvette Couch-Lewis spoke to us about some of the projects that are being undertaken or planned at Rapaki, including proposals for a new marae. We were then taken on a guided tour, where we were told of the history of the settlement by Cain Tauwhare (on the beach, buffeted by a cold southerly!), heard about the regeneration of the bush between Rapaki and Pony Point, plans for a new sea wall, the mataitai (protected customary food gathering and fishing area), and the breeding success of white-flipped penguins on Quail Island/Otamahua, two of which have taken up residence below the old school house at Rapaki. Yvette then took us to Omaru stream, and explained the restoration work that had taken place, and the plans to return the stream to its former glory.

The visit concluded with lunch in the wharekai, which was a great opportunity to mingle and talk informally to members of the community. Mike White thanked Yvette and the Rapaki community on behalf of the Society. He echoed the thoughts of all those present by highlighting the views and values shared by the Society and the tangata whenua in respect of the local environment, commenting on Yvette's obvious commitment and enthusiasm, thanking her for making the Society feel so welcome, and expressing the hope that the visit will signal a much closer association with Rapaki.



Society members learn about the history of Rapaki and the Port Hills



(above) Yvette Couch-Lewis and Cain Tauwhare



(right) Yvette speaks about the work being done on Omaru Stream



"Years ago Rapaki was claimed for us by our tupuna, Te Rakiwhakaputa, who placed his rapaki on the beach, securing the land that became our turangawaewae. Later the hall was named Te Wheke, after the youngest son of Te Rakiwhakaputa.

Our mountain Te Poho Tamatea was named after the captain -the breast of Tamatea- of the Ngai Tahu waka Takitimu. The mountain is significant as it is part of the the ngai tahu story of the great waka Takitimu and its captain. The story of Te Poho Tamatea is of the captain and crew arriving ontop of the mountain when a storm blow up and extinguished his fire stick he call to his tupuna and sang out a karakia for the great fires in the north to travel down and light his fire stick so that they would be warm and to light their way home.

Whakaraupo means Whaka Harbour and raupo after the abundents of raupo that grew at the head of the harbour, which the people used for moki (small sailing craft) and cooking."

The Wesleyan Church at Rapaki



Members of the Society and iwi Kainga at Rapaki



NGAIO MARSH HOUSE

– Sunday 31 October ▶

The outing on Sunday 31st October was a visit to the historic Ngaio Marsh House in lower Cashmere. The house itself was designed by leading Christchurch architect, Samuel Hurst Seager, and built at the beginning of last century. It contains family treasures and antiques from around the world, and gives an insight into the background and work of Dame Ngaio Marsh, who was world-renowned as a fiction crime writer and Shakespearean producer. The house is a 'must' for all those interested in local history. It is managed by a Trust, and the entry fee of \$10 goes towards the maintenance of the house and contents.



Our informative guide gave an interesting talk on the life of Dame Ngaio and the house has been set up as it was when she lived there.

END OF BBQ

– Friday 10 December

Despite the typical December weather – wet, windy and cold – 25 members attended the end of year barbecue on Friday 10th December at Victoria Park. We would like to take this opportunity of thanking Paul Devlin for the use of the Port Hills Rangers' tea room which made it possible to escape the weather.

LITTLE PORT COOPER – Sunday 28 November

An eager group of members heading for the historic Little Port Cooper courtesy of the Stapleton-Smiths of Camp Bay. Views of the harbour are spectacular from this angle.



Events for 2005

The Activities and Promotions Committee is planning a full programme of events for 2005

February 27		March 20
<p>The first Outing of the year will be visiting Kennedy's Bush. As many of you know, Kennedy's Bush was the first Scenic Reserve on the Port Hills, gazetted in 1908. Many early conservation efforts were concentrated here, and over the years, the Society has taken an active role in track creation and maintenance, planting and weed control. Kennedy's Bush was an early priority for the work parties established by Cliff Holdsworth and Cedric Turner.</p> <p>Anne Henderson will lead the outing, and talk in more detail about the reserve and the Society's work. Anne has been involved with Kennedy's Bush since 1985, when she joined the 'Kiwi Gang' and has spent countless hours on planting, weed control and track maintenance. At the time she was also</p>	<p>the Society's secretary, a position she held until 1993, and it was said that she "...wielded a grubber with as much skill as her typewriter." Earlier this year she announced her 'retirement', but a reliable source has told us that as late as the end of last month, she spent some time tending the latest plantings.</p>	<p>We are planning to visit Quail Island/Otamahua, where there will be a guided walk led by Colin Burrows, who will be talking about the history of the island, and the current restoration projects.</p>
	March	April
	<p>The Society's Annual General Meeting will be held in mid-March, and we are currently finalising the date and venue. Professor Ann Smith from Landcare Research has kindly agreed to speak at the meeting. Whilst we have not yet finalised details, her talk will be relevant to our current work on the Regional Park concept.</p>	<p>In recent years, for the April event, the Society has had a display at the Department of Conservation's Canterbury Conservation Day at their Motukarara nursery. Currently, in consultation with the various groups that support the Conservation Day, DoC is carrying out a review of the event. We will publicise the results of the review as soon as these are available.</p>

Regional Park



A major milestone was reached on the 25th November, when Professor Ann Smith and Dr Colin Meurk of Landcare Research presented the report commissioned by the Society setting out the options for a 'Regional Park' for the Port Hills. The report contained an action plan and some firm recommendations, which are currently being considered. There will definitely be some positive steps taken early next year, including detailed discussions with a wide range of organisations, groups and individuals with an interest in the Port Hills. Ann, a Society member, has kindly agreed to speak at the AGM on 15th March about the 'Regional Park' concept, and this will be a good opportunity to for the wider membership to hear about progress.

This work has been a Society priority during the year, with a significant amount of time and effort from a number of people. It is perhaps worth summarising how we arrived at this position. Landcare Research's presentation had the provocative subtitle of "Why hasn't it happened yet?". The concept of some form of overall

protection for the Port Hills pre-dates the Society, and has been around for at least 80 years. In recent times, largely as a consequence of the increased pressure on the hills, the debate has intensified, and there have been any number of papers, reports and discussions. Whilst there is wide agreement about the need for protection, there has been very little work done on what form this protection might take. Understandably the use of the word 'park' with its connotations of public ownership and control has aroused suspicion, particularly amongst those that own land and make a living from it.

The Society therefore decided to commission the preparation of a 'vision document', which would look at the options, the implications of these, and how the concept might be implemented. The intention is for this report to form the basis for consultation in the hope that some firm action will result. A number of individuals/organisations with relevant expertise were invited to submit proposals, and Landcare Research was appointed after a selection process.

The Executive was impressed with the local, national and international knowledge and experience that Landcare Research could bring to the project. The Board agreed with the Landcare Research team how the project would be carried out, and detailed work started in earnest in May, with a workshop. This was followed by a significant amount of research, and discussions between Landcare Research and some of the major stakeholders.

From the outset, it was recognised that some lateral thinking was needed to secure wide support for the protection measures that were felt necessary. It was also considered fundamental that whatever form the 'Regional Park' might take, it would have to allow for all normal activity to take place, but against a background of protecting what makes the Port Hills special. We believe that Landcare Research has come up with a proposal that can achieve just that.

The Society would like to acknowledge financial support from the Community Trust, which has made this important project possible.

The Harry Ell Summit Road Memorial Trust

The purchase, protection, enhancement of open spaces on the Port Hills for all to enjoy

The Harry Ell Summit Road Memorial Trust was set up by the Society in 2002, with the express purposes of:

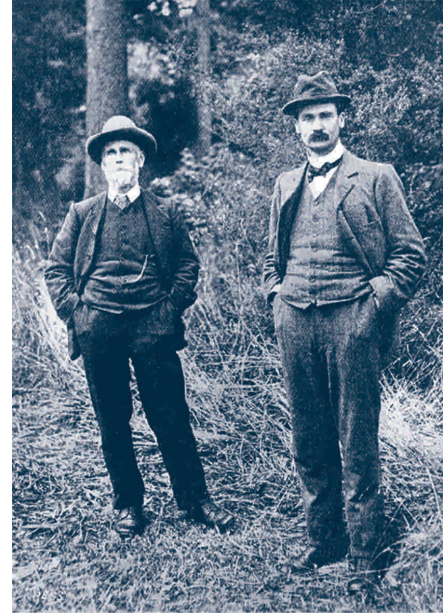
- To receive funds for the furtherance of the works of The Summit Road Society (Incorporated)... and in particular—
 - (i) To enable the Society to purchase or otherwise acquire land on the Port Hills
 - (ii) To generally further the works of the Society by way of funding the ongoing maintenance of tracks and other facilities
- To invest funds received in either approved Trustee investments or in projects which may be promoted or endorsed by the Society.

The Society shares with many other groups and individuals the growing acknowledgement of the importance to Canterbury of the finite Port Hills environment. Many people now point to the backdrop

of the Port Hills as Christchurch's unique signature, and have asked how they can assist in a tangible way. To meet the above needs it is important that the Society has substantial funds on hand to take advantage of opportunities to purchase. The Society recognises that outright purchase on a willing seller/willing buyer basis is the best way to protect open space. Funds are also required for the continued maintenance of acquired land and ongoing maintenance work.

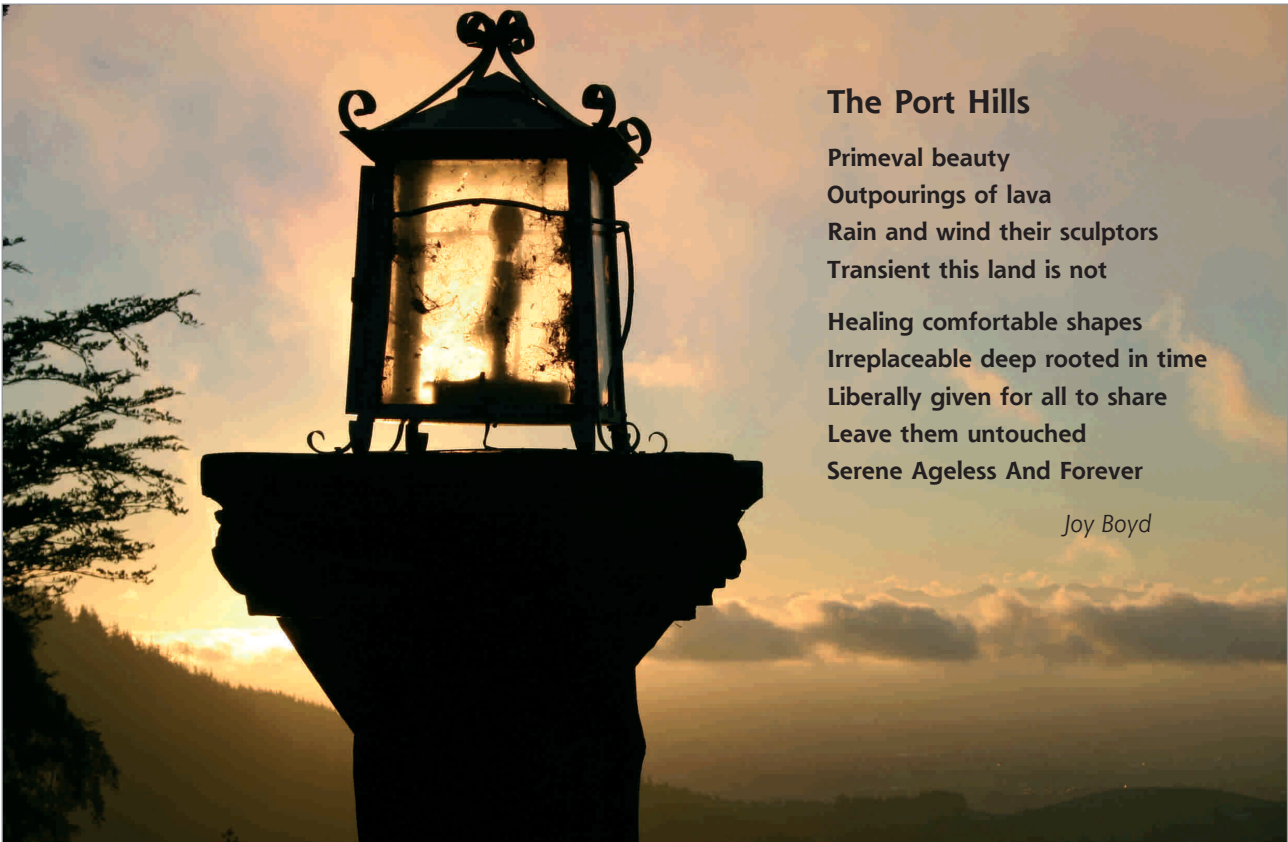
If you are planning to make a donation, or arrange a bequest which is intended to help to preserve the Port Hills, or indeed know anyone in this position, we would ask you to consider the merits of placing the donation or bequest with the Trust.

It is worth remembering that our acquisition of Ohinetahi Reserve was only made possible by bequests. This land has been protected by an Open Space Covenant and is available for all to enjoy.



Dr Cockayne and Harry Ell [1904]

**For further information please contact
the Treasurer
Paul Loughton
322 7082**



The Port Hills

Primeval beauty
Outpourings of lava
Rain and wind their sculptors
Transient this land is not

Healing comfortable shapes
Irreplaceable deep rooted in time
Liberally given for all to share
Leave them untouched
Serene Ageless And Forever

Joy Boyd

Resource Management Round Up

The Resource Management area continues to be busy, although during the last six months there have not been any major issues to address. We would still like to strengthen the Resource Management Group, so that we can be more proactive, keep 'ahead of the game', and have an agreed position on the next big issues. One way of doing this could be a 'forum' twice a year. If you are interested in this vital area of the Society's work, please contact the Secretary. We are also reliant on members to bring issues to our attention. We have many eyes and ears, and are normally kept well informed by the local authorities. However, there are inevitably things that we miss. If you know of any issues that you feel should concern the Society, please do not hesitate to contact the President or the Secretary.



Awaroa/Godley Head:

The proposals for a coastal Park were mentioned in the last Newsletter. Submission hearings took place on the 19th/20th August. The submissions are still being considered by Christchurch City Council and the Department of Conservation.

Christchurch City Council's draft Biodiversity Strategy:

This is an important document, which sets out to ensure the conservation and enhancement of Christchurch's biodiversity. It has a vision of achieving:

"A Garden City internationally renowned for the conservation, restoration and display of its unique natural biodiversity.

Local communities working together to sustain the full range of species and habitats which are special to the Port Hills, coast, plains and waterways and wetlands of Christchurch."

The draft strategy explains what is meant by biodiversity, and contains good summaries of the issues relating to birds, plants, reptiles, fish, freshwater invertebrates, terrestrial invertebrates, animal pests and plant pests.

The vision for the Port Hills is:

"This distinctive hill landscape has its natural remnants of podocarp forest connected in the next 50-100 years; gullies are revegetated to create connections to the Heathcote River and the mixed urban woodland suburbs of the Port Hills. Forested connections between the inner Lyttelton Harbour and Christchurch city support movement of birds, invertebrates, and lizards. Efforts are made in the next 10-20 years to maximise natural regeneration and build on habitat connections with flax gullies and cluster plantings of totara, matai, kowhai, ti kouka, kaikomako, mahoe, kanuka and narrow-leaved lacebark.

Grazing of grasslands is managed so that silver tussock communities are maintained, soil conservation is maximised, and sediment loss is minimised. Integrated catchment management is underway to regulate

surface water flows in each catchment, and the amount of sediment reaching the Heathcote River.

The Port Hills continue to be managed for their unique mix of ecological, historical, cultural, landscape and recreational values"

The Society has indicated its support for the strategy, and made some detailed comments. Part of the strategy is to create a 'Biodiversity Plan' for the Port Hills, and we expect to be involved in this. Copies may be obtained from the Civic Offices and Service Centres, and it is available on the Council's website.

Selwyn District Plan:

This has now been adopted by Selwyn District Council. There are two important principles in the Plan relating to the Port Hills. The first is that the whole of the Port Hills within the Selwyn District above the 60m contour is classified as "Outstanding Landscapes and Natural Features" in accordance with the Resource Management Act. The second is that the Port Hills have been split into the "lower slopes", below the 160m contour, and the "upper slopes" above this. The Plan contains different subdivision rules for each of these. The minimum area for subdivision on the lower slopes is 40ha and on the upper slopes, 100ha. This is a significant change, as the draft plan had a minimum area of 40ha for the whole of the hills. The area below the 60m contour is classified 'Inner Plains', with a subdivision minimum of 4ha.

We understand that there have been a number of appeals against the plan, which may take as long as two years to resolve. However, it is pleasing to know that there are now agreed criteria against which to judge any new resource consent applications.

Banks Peninsula District Plan:

The Society presented a submission to the hearing into the proposed variation to the Rural Provisions of the Plan on 8th July. The main argument in the submission was that the whole of the Port Hills should be considered an "Outstanding Natural Features and Landscape Area" rather than the small sections proposed. We drew the

Commissioner's attention to the fact that this was consistent with the classification used by both Christchurch City Council and Selwyn District Council. The counter-argument is of course that the whole of the Peninsula is outstanding, and that lines must therefore be drawn around the most important features. We disagree with this view, and firmly believe that the proximity to Christchurch and Lyttelton, bringing with it greater pressure for recreation and development, justifies the whole of the Port Hills being treated differently. We are still waiting for a decision on the submissions.

Kennedy's Bush Road:

In the last Newsletter, we reported that application for the subdivision had been declined at the Environment Court, the judge concluding that it could not be considered in isolation, and that a comprehensive approach to the whole of the Landsdowne Valley is required. Initially, the developer appealed this decision, but subsequently withdrew the appeal. For the time being, therefore, further 'urban creep' in this area has been halted. However, we anticipate that this area will continue to be under pressure, and be one that the Society will need to monitor closely.

Concessions in Christchurch City Council Parks and Reserves:

The Council is becoming increasingly concerned about the ad hoc nature of the use by commercial organisations of council owned/controlled land. Accordingly a policy has been drafted for public consultation. The Society has confirmed its overall support for the policy, particularly as it seeks to protect parks and reserves, and seeks to ensure that public use and enjoyment is not affected by any commercial activities. However, we did raise some concerns about the need to ensure that organised activities such as those arranged by the Society and similar groups, club activities (eg climbing or mountain-biking), educational activities (eg the Polytechnic) are not caught up in the process. These are all of course examples of the traditional (and free!) activities that are so precious to those who enjoy the Port Hills.

Websites of Interest

There are a number of websites that may interest members; a few are mentioned below. If you have a favourite site that you think will interest other members, please let me know. Remember that the Society has its own website at: www.summitroadsociety.org.nz

NEW ZEALAND CONSERVATION VOLUNTEERS

This website covers voluntary conservation projects nationwide, with links to the websites of number of other organisations. The Society is registered with NZ Conservation Volunteers as a 'project' ("... Perhaps one of the better examples of project description now on the site is that for the Summit Road Society..."). We subscribe to its quarterly newsletter. The site now has 11,000 visits per month. As well as details of a number of projects, other interesting websites are mentioned. NZ Conservation Volunteers can be found at:

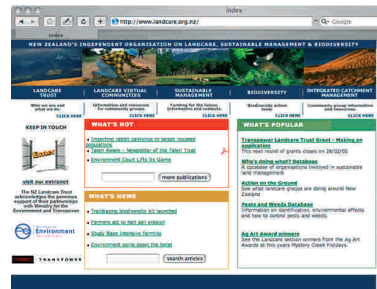
www.conservationvolunteers.org.nz



LANDCARE TRUST

This website is titled "New Zealand's independent organisation on landcare, sustainable management, and biodiversity". The Landcare Trust is an independent trust set up to support, encourage and empower local groups. The website has details of a number of projects throughout the country, and detailed information about resources that are available to help voluntary groups. Locally, the Trust has given considerable support to the Banks Peninsula Trust. It can be found at:

www.landcare.org.nz



FOREST AND BIRD

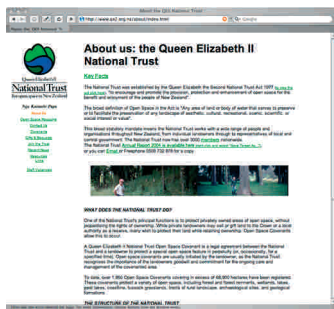
Many Society members will be members of the Royal Forest and Bird Protection Society. Not surprisingly, this website contains a wealth of information about the current issues affecting the environment. The address is:

www.forestandbird.org.nz

QE II NATIONAL TRUST

This trust was set up to protect privately owned 'open space' for future generations. 67,000 ha of land have now been protected by covenant or protection agreements, including the Society's own Ohinetahi Reserve. In addition to information about the help that the Trust can give to landowners, the site has details about projects nationwide. The Society receives the Trust's magazine, 'Open Space'. QE II National Trust can be found at:

www.qe2.org.nz



It goes without saying that government and local body websites are a very valuable resource. The main ones of relevance to the Society are:

CHRISTCHURCH CITY COUNCIL

www.ccc.govt.nz
Easy to find your way round, and there is always detailed information about current issues and any strategies or policies for public consultation.

MINISTRY FOR THE ENVIRONMENT

www.mfe.govt.nz

THE PARLIAMENTARY COMMISSIONER FOR THE ENVIRONMENT

www.pce.org.nz
The PCE is an independent office of Parliament, set up to provide advice to government on environmental issues. The website has a number of reports, some of which are relevant to the Society's work. Examples are a report on Banks Peninsula, and one dealing with 'iconic' landscapes close to urban areas. The Commissioner, Dr Morgan Williams, has a particular interest in Christchurch & Banks Peninsula, and is a strong advocate for finding a new (to NZ) model to ensure protection of the whole area.

DEPARTMENT OF CONSERVATION

www.doc.govt.nz
This not only contains news on current conservation issues, but is also useful for general information on the conservation estate, tramping etc.

ENVIRONMENT CANTERBURY

www.ecan.govt.nz
Again, the site has a wealth of information about current conservation issues and initiatives in the Canterbury Region.